

SUPPORTED DEVICES/APPLICATIONS

SOURCE	APPLICATION
DVI, HD-SDI	HD Endoscopy, PACS, Vital Signs, Room Camera
HD-RGBS, HD-YP _b P _r	HD Endoscopy
RGBS, YP _b P _r , SDI	SD Endoscopy
S-Video, Composite	Fluoroscopy, SD Endoscopy, Ultrasound
VGA	PACS, Endoscopy, Ultrasound, Angiography

HIGH DEFINITION LED BACKLIGHT SURGICAL DISPLAY

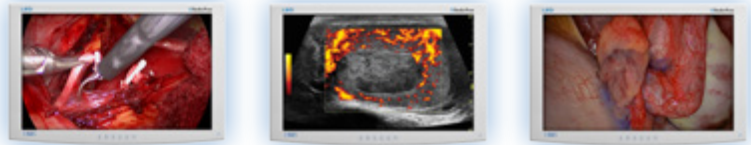


IMAGE PERFORMANCE

LCD Panel	Active Matrix TFT with IPS, LED Backlight
Image Size (W x H)	20.4 x 12.8 inches (518 x 324 mm)
Viewing Area (Diagonal)	24 inches (611 mm)
Pixel Pitch	0.270 mm
Resolution (H x V)	1920 x 1200 (WUXGA)
Luminance	300 cd/m ² (Max), 250 cd/m ² (Typical at 6500K)
Contrast Ratio	1000:1 (Typical)
Aspect Ratio	16:10
Number of Colors	1.08 Billion (10-bit)
Viewing Angle	178°
Response Time	14 ms (Typical)
Gamma	1.8, 2.0, 2.2, 2.4, 2.6, PACS

INPUTS

DVI	DVI-D
HD-SDI	BNC, 75 Ω
HD-RGBS, RGBS	DVI-I or HD-15, 0.7 Vp-p ± 6db, 75 Ω
HD-YP _b P _r / YP _b P _r	DVI-I or HD-15, 0.7 Vp-p ± 6db, 75 Ω
VGA	HD-15, 0.7 Vp-p ± 6db, 75 Ω
S-Video	DIN-4, 0.7 Vp-p +6/-3db, 75 Ω
Composite	BNC, 0.7 Vp-p +6/-3db, 75 Ω

CONNECTIVITY

DC OUTPUT

5 Volts DC Output	Mating Power Plug - CUI P/N PP-015 (Up to 1 Amp) (For powering an external fiber-optic receiver)
-------------------	---

CONTROL INPUT

Serial Remote	D-sub 9pin, RS-232C
ND-OS	Mini-USB

USER CONTROLS - ON-SCREEN MENU

Input Selection, Brightness, Contrast, Hue, Saturation, Gamma, Sharpness, RGB Gain, Backlight Level, Horizontal & Vertical Position, Phase, Frequency, DPMS, Auto-Source Select, Scaling, Overscan, Programmable User / Modality Settings Profiles

SUPPLIED / OPTIONAL ACCESSORIES

Supplied: Power Supply, AC Cord, Video Cables - S-Video, BNC, VGA, DVI, Product Documentation CD, Printed User Manual
Optional: Desktop Stand (26B0078), 30 ft. Power Extension Cable Kit (90I0017), 5 VDC Output Cable For Fiber Adapter (35X0100)

COMPLIANCE & CERTIFICATIONS UL60601-1, ANSI/AAMI ES60601-1, CAN/CSA C22.2 No. 60601-1, FCC Part 15, EN60601-1, EN60601-1-2, CE, MDD 93/42/EEC, 2007/47/EC, RoHS, WEEE, CCC, IP 32 (Pending), Class I Medical Device

INPUT / OUTPUT CONNECTOR PANEL



STANDARD DISPLAY PART NUMBERS

90K0010 - 24" EndoVue LED - Rest of World (ROW)
 90K0011 - 24" EndoVue LED - China

VIDEO INPUT FORMATS

Format	Input (Digital)	Input (Analog)	Horizontal Frequency (kHz)
576/50i (PAL)	SDI	Comp, S-Video, RGBS, YP _b P _r	15.625
480/60i (NTSC)	SDI	Comp, S-Video, RGBS, YP _b P _r	15.734
576/50p	DVI	RGBS, YP _b P _r	31.250
480/60p	DVI	RGBS, YP _b P _r	31.469
720/50p	HD-SDI, DVI	HD-RGBS, HD-YP _b P _r	37.500
720/60p	HD-SDI, DVI	HD-RGBS, HD-YP _b P _r	45.000
1080/50i	HD-SDI, DVI	HD-RGBS, HD-YP _b P _r	28.125
1080/60i	HD-SDI, DVI	HD-RGBS, HD-YP _b P _r	33.750
1080/50p	DVI	--	56.2
1080/60p	DVI	--	67.3



Corporate Headquarters
 5750 Hellyer Avenue
 San Jose, CA 95138 (USA)
 Tel: 408 776 0085
 Toll Free: 866 637 5237
 Email: info@ndssi.com

Europe
 Nijverheidscentrum 28
 2761 JP Zevenhuizen (ZH)
 The Netherlands
 Tel: +31 180 63 43 56
 Email: info-EMEA@ndssi.com

Asia Pacific
 East Square Omori,
 6-20-14 Minamioi, Shinagawa-ku,
 Tokyo 140-0013, Japan
 Tel: +81 3 5753 2466
 Email: info@ndssi.jp